



MXI SECURITY™

A division of MEMORY EXPERTS INTERNATIONAL

Security in Motion™



Portable Security Devices

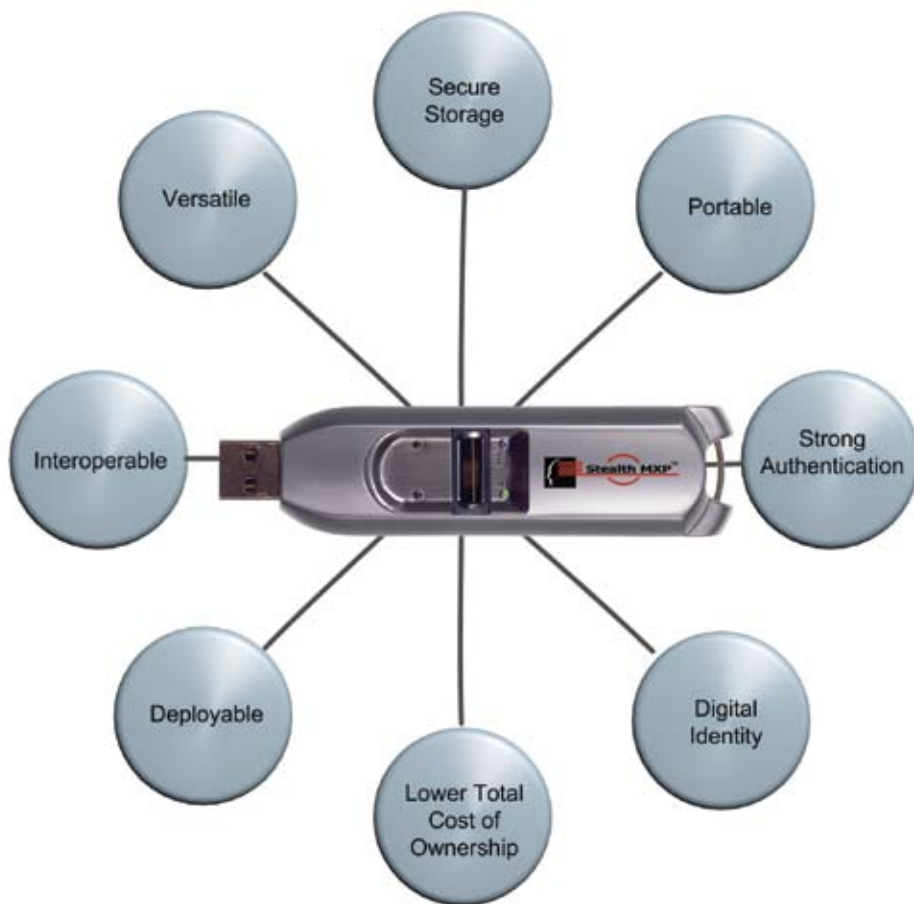
*Stealth MXP™
Family*

www.mxisecurity.com



MXI Security™, a division of Memory Experts International, a leader in building memory-based products for Fortune 500 companies for more than a decade, provides portable security devices for professionals for whom security and privacy is critical. Designed to meet the security and privacy needs of the world's largest private and public sector organizations, MXI Security's portable security devices combine the power of secure storage with identity, encryption, and authentication services. MXI Security's portable security devices enable organizations to satisfy multiple security needs with a single device, all with reduced complexity and more portability than previously possible.

MXP All-In-One





The Stealth MXP™ Family of Portable Security Devices consists of Stealth MXP™, Stealth MXP™ Passport, Stealth MXP™ Bio Token and Stealth MXP™ Token.

Except for Stealth MXP Bio Token and Stealth MXP Token, each MXP device can provide up to 4GB of portable secure storage of confidential information with strong authentication. MXP devices provide true portability on any environment that supports USB mass storage with on-board processing for seamless, hardware based AES 256 bit encryption.

When used with ACCESS Identity™ and Remote ACCESS™ software solutions, a single MXP device can satisfy many of the security needs of an enterprise including strong authentication, public key cryptography for email signing and file encryption, digital identities for network logins and single sign on, as well as portable authentication for remote access. MXP devices are also ready for web services and federated digital identity systems with their capability for generating SAML tokens for WS-Trust claims based identity transactions.

MXI's technology interoperates with a wide variety of existing security applications. The driverless approach makes it very inexpensive and easy to deploy the technology in a wide combination of network and security environments. Managing large deployments is effortless and provides organizations the ability to fully control security policies, deployment and usage of the devices when using ACCESS Enterprise™, a zero impact deployment solution.

Stealth MXP™

Stealth MXP is ideally suited for organizations/users that require strong 2-factor or 3-factor authentication (biometric, password or both) and can satisfy its need for secure portable storage and digital identities for today and tomorrow.

Stealth MXP: portable secure storage, digital identity, strong authentication, all-in-one.

FIPS 140-2 L2



BIOMETRIC & PASSWORD
AUTHENTICATION



USB MASS
STORAGE



DIGITAL
IDENTITIES



CRYPTO
SERVICES

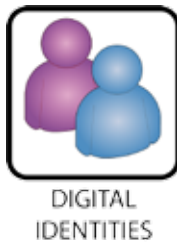
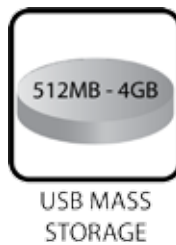


Stealth MXP™ Passport

Stealth MXP Passport is ideally suited for organizations/users that prefer a password based secure encrypted USB Flash Drive with digital identities.

Stealth MXP Passport: portable secure storage, digital identity, strong authentication, all-in-one.

FIPS 140-2 L2



Stealth MXP™ Bio Token

Stealth MXP Bio Token is ideally suited for organizations/users that require a device to provide portable 2-factor or 3-factor authentication and multiple digital identities without the need of portable storage.

Stealth MXP Bio Token: portable digital identity, strong authentication, multiple security functions satisfied, all-in-one.



BIOMETRIC & PASSWORD
AUTHENTICATION



DIGITAL
IDENTITIES



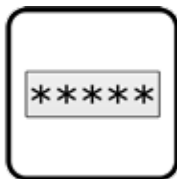
CRYPTO
SERVICES



Stealth MXP™ Token

Stealth MXP Token is ideally suited for organizations/users that prefer 2-factor authentication for portable digital identities and do not need portable storage.

Stealth MXP Token: portable digital identity, strong authentication, multiple security functions satisfied, all-in-one.



PASSWORD
AUTHENTICATION



DIGITAL
IDENTITIES



CRYPTO
SERVICES



Stealth MXP Family Functional specifications:

Features

- Driverless – Patent pending, user-mode protocol for full portability of all functions
- Hardware based cryptographic services
- Administrative functions for management of devices and security policies
- Enterprise management with MXI ACCESS™ Enterprise
- LEDs to indicate power, data activity, and authentication status
- USB 2.0/1.1 Compatible
- Compact, portable footprint
- Retractable USB sensor and USB port
- Key management functions for device rescue and data recovery

Authentication

- Biometric Authentication (Identification and Verification) (1)
- Password Authentication
- Two-Factor Authentication on board (Biometric + Password) (1)
- Three-Factor Authentication for Digital Identities (Biometric + Password + Key) (1)
- Up to six (6) fingerprint enrolments (1)
- Hardware fingerprint capture and comparison using swipe sensor technology (1)

User Policies

- Up to five (5) users
- Two (2) roles: Administrator or General User
- Configurable password retry limit
- Configurable minimum password length
- Configurable biometric retry limit (1)
- Configurable biometric security levels from 1:2,700 to 1:100,000 FAR (1)
- Encrypted disk partitions with adjustable sizes and assignment to device users (2)

General Purpose Cryptographic Services

- 256 symmetric key containers for 256 bit AES and HOTP secret keys
- 504 asymmetric key containers for up to 3072 bit RSA keys
- One time password generation compliant with OATH HOTP algorithm
- 256 bit AES encryption/decryption (FIPS Pub 197)
- SHA-1 and SHA-256 hash algorithms (FIPS Pub 180-1/180-2)
- Keyed-Hash Message Authentication Code (HMAC) (FIPS Pub 198)
- RSA key generation (X9.31 and PKCS #1)
- 1024/2048/3072 bit RSA Key sizes
- RSA Signature and Verification (X9.31 and PKCS #1)
- RSA Encryption/Decryption (PKCS #1)
- Random Number Generation (RNG and PRNG)
- SAML Token generation for WS-Trust

Storage Capabilities

- Up to 5 (one per user) user private disk partitions transparently encrypted with 256 bit AES (2)
- Up to 5 (one per user) internal secure private stores for software application use
- Two internal public stores for software application use (one R/O, the other R/W)
- One configurable R/O disk partition for carrying portable applications
- Flash memory capacities of 512MB, 1GB, 2GB and 4GB (2)
- Ability to enable and configure a public, non-encrypted disk partition (2)

Note (1): Not available on Stealth MXP Passport or Stealth MXP Token

Note (2) Not available on Stealth MXP Bio Token or Stealth MXP Token

Functional specifications continued:

Power: USB bus power

Environment

- Windows 2000, XP, Vista, MAC, Linux

Physical

Dimensions (H x W x L)

- Open: 12 x 25.9 x 102 mm (0.475 x 1.02 x 4")
- Close: 12 x 25.9 x 90.2 mm (0.475 x 1.02 x 3.52")
- Weight: 40g (.08 lbs)

Warranty

- Limited 1 year warranty. Return to point of purchase

Regulatory

- Certification FCC Part 15 Class B
- CE EN55022 Class B (1998) for conducted and Emissions

Environmental Specifications:

Operating temperature 0 ~ 60 °C

Non operating temperature -20 ~ 70 °C

Relative humidity 5% ~ 95% non-condensing

MXI Security Partners



MobileSecure



Schedule
GS-35F-0142S



© 2005-2007 Memory Experts International. Specifications are subject to change without notice. Stealth MXP, MXI ACCESS, ACCESS Identity, Remote ACCESS and ACCESS Enterprise are trademarks of Memory Experts International. All other names mentioned herein are trademarks or registered trademarks of their respective owners. Entrust is a trademark of Entrust, Inc. in certain countries. Entrust is a registered trade mark of Entrust, Inc. in the United States and other countries. In Canada, Entrust is a registered trademark of Entrust Technologies Limited. All Entrust product and program names are trademarks of Entrust, Inc. – January 5th, 2007

TM: A Certification Mark of NIST, which does not imply product endorsement by NIST, the U.S. or Canadian Governments.



MXI, A Certified Zero Waste To Landfill Company



MXI Security™, a division of Memory Experts International

2321 Cohen Street
Montreal, Quebec, Canada H4R 2N7
Tel.: (514) 333-5010
Toll free: (888) 422-6726
Fax: (514) 333-5020

1651 E. St Andrew Place
Santa Ana, CA, USA 92705-4932
Tel.: (714) 258-3000
Toll free: (888) 440-0400
Fax: (714) 258-3040

Saracen House, Swan Street, Old Isleworth
Middlesex, UK TW7 6RJ
Tel.: +44 (0) 208-758-9600
Fax: +44 (0) 208-758-9601

3706 Lippo Centre II, 89 Queensway
Admiralty, Hong Kong
Tel: +852-2147 5880
Fax: +852-2147 5881

For more information, please visit:
www.mxisecurity.com